

WIN \$5 Million Grand Prize

Built by

Mazzei.

In collaboration with



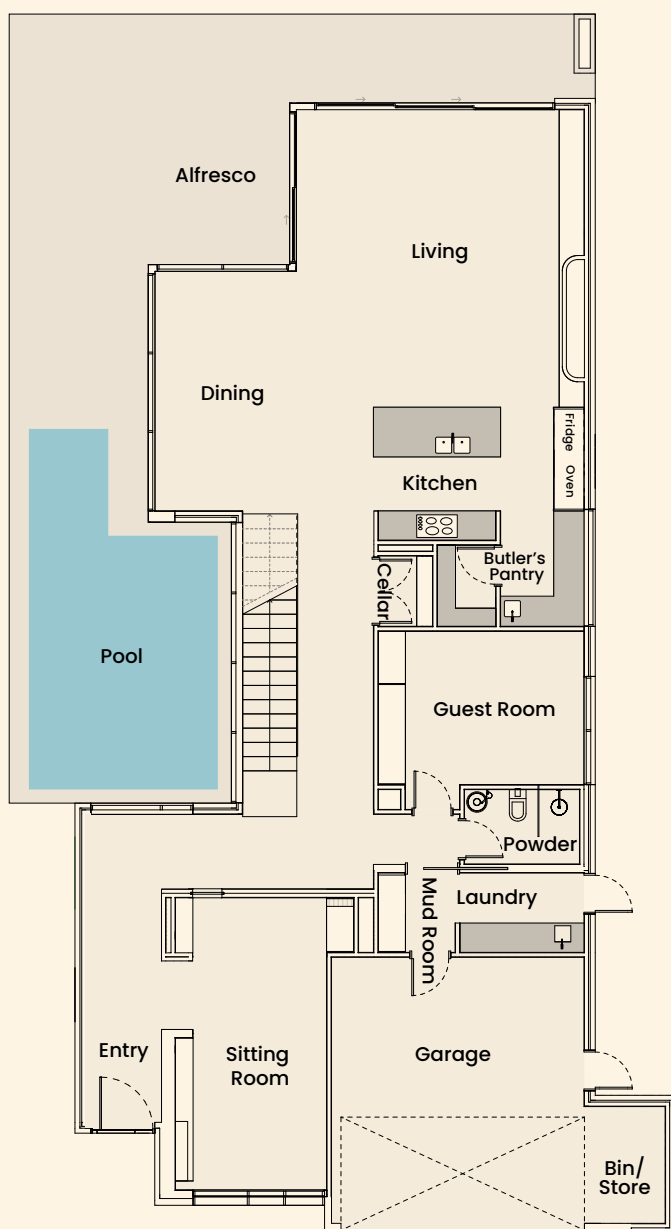
Webster A&I

Nathan Burkett
Landscape Architecture

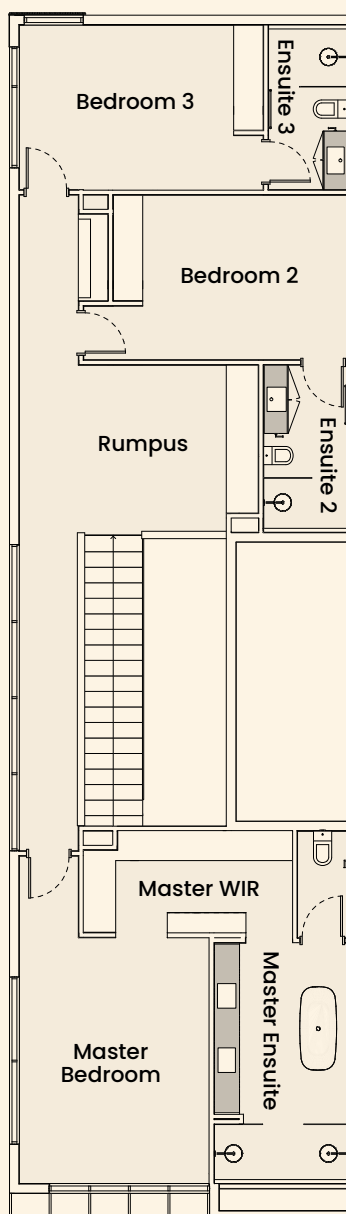
38 Bateman Street, Hampton

Imagine living mortgage-free, Bayside, in this prestigious 4-bedroom home custom-built by Mazzei. It comes exquisitely furnished, fully landscaped and includes \$60,000 in gold!

Ground Floor	198.12m ²
First Floor	159.57m ²
Total Living Area	357.69m²
Garage	40.70m ²
Porch	7.08m ²
Alfresco	31.86m ²
Total Building Area	437.33m²
Block Size	660.00m²



Ground Floor



First Floor



Buy your tickets today

rmhHomeLottery.com.au
1300 780 312

